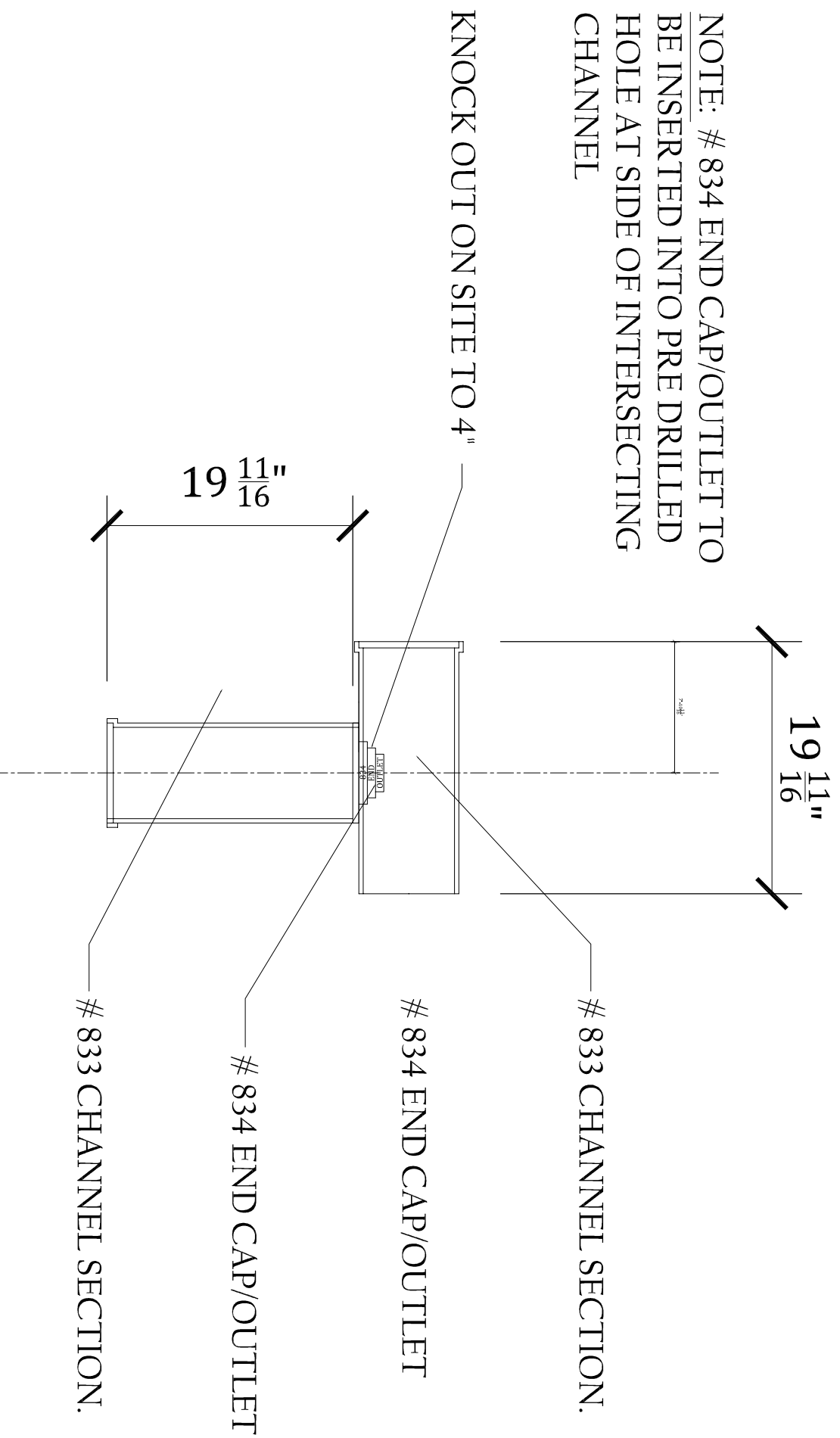


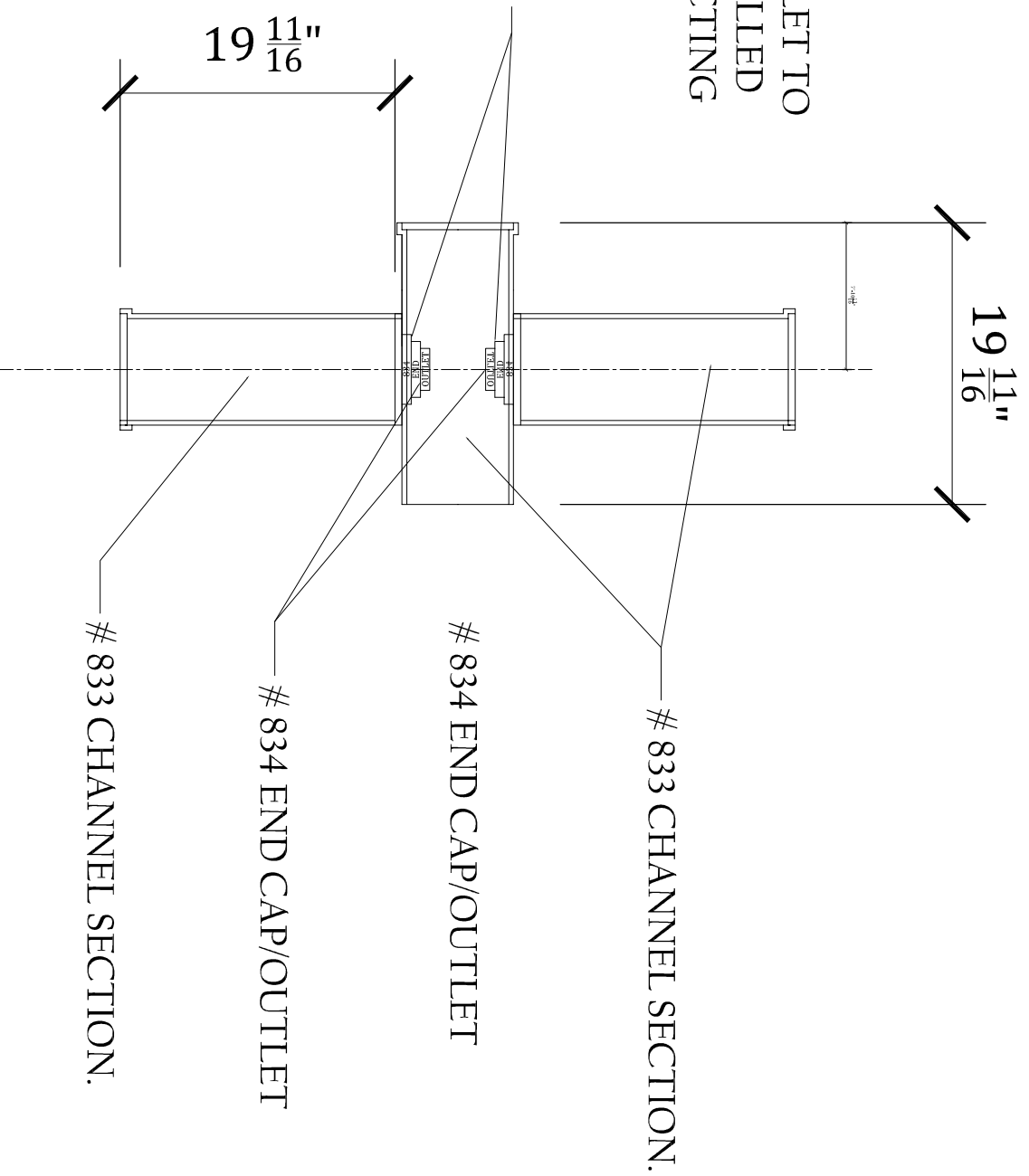
NOTE: # 834 END CAP/OUTLET TO BE INSERTED INTO PRE DRILLED HOLE AT SIDE OF INTERSECTING CHANNEL



8" PRO "T" INTERSECTION

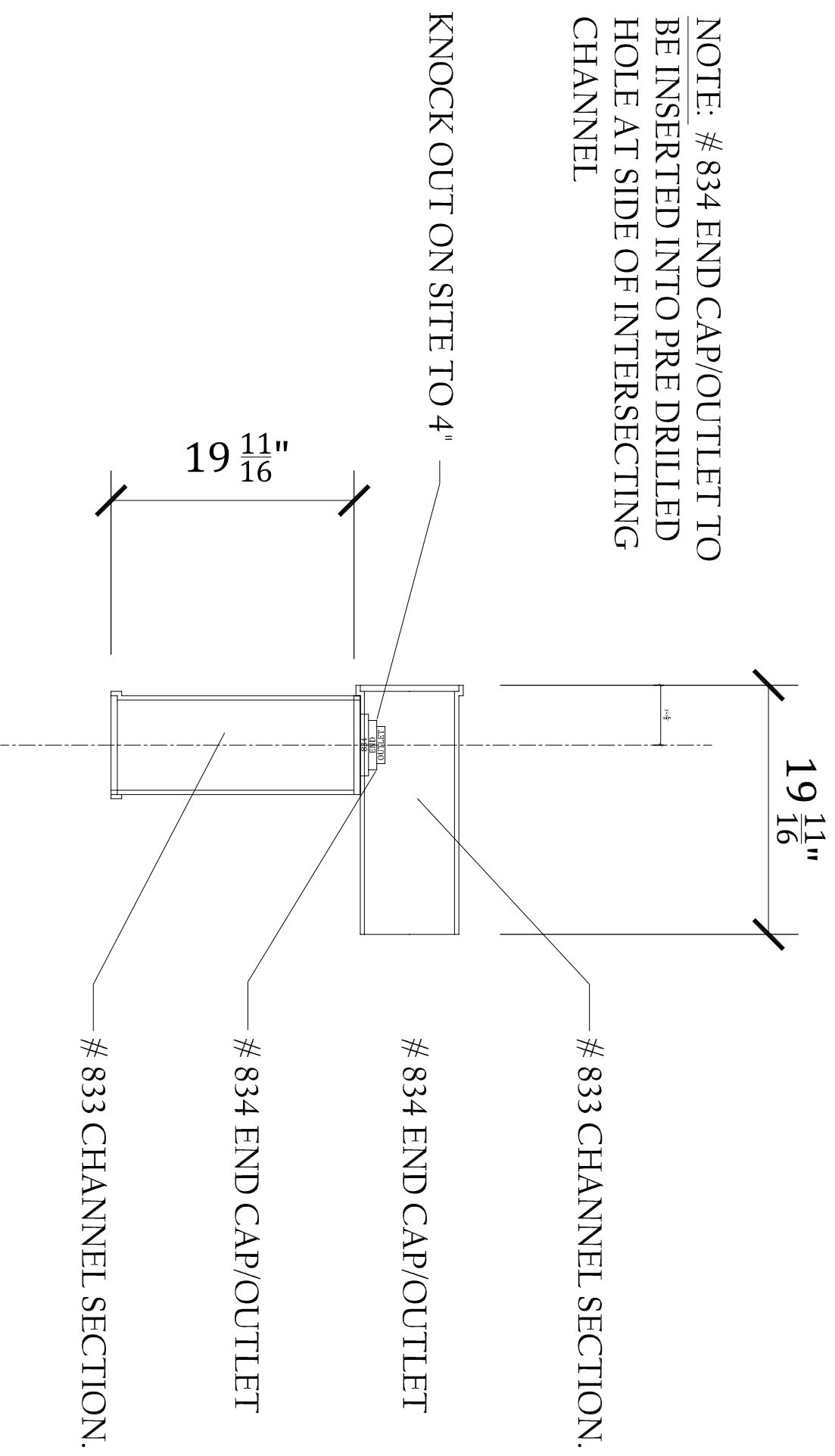
NOTE: # 834 END CAP/OUTLET TO BE INSERTED INTO PRE DRILLED HOLE AT SIDE OF INTERSECTING CHANNEL

KNOCK OUT ON SITE TO 4"



8" PRO "X" INTERSECTION

NOTE: # 834 END CAP/OUTLET TO
BE INSERTED INTO PRE DRILLED
HOLE AT SIDE OF INTERSECTING
CHANNEL



8" PRO 90° INTERSECTION